

King Court Express

Volume I, Issue I

27/03/2014

DWARF PLANET DISCOVERED!

New research has discovered a new dwarf planet on the outskirts of our solar system.

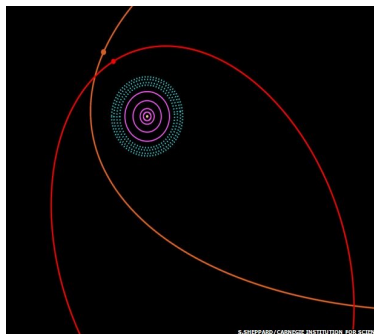
The dwarf planet is currently being called 2012 VP113. The newly discovered dwarf planet follow an unusual orbit around the sun. When it is its closest to the sun it is till eight times the distance earth is to the sun.

Chad Trujillo, from Hawaii, is the head of adaptive optics at Gemini Observatory and he is the co-founder of the new dwarf planet 2012 VP113. He says that 2012 VP113 is to far away from the sun in the majority of its orbit to contain liquid water of any means

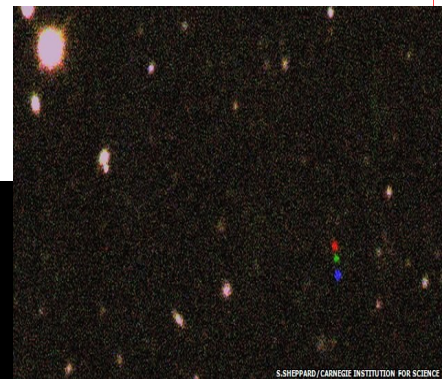
However the fight for Pluto to become a major planet again is highly unlikely

The dwarf planet is a 'Reddish' colour. This newly founded planet probably contains methane ice and carbon dioxide ice by scientist prediction.

Scientist believe that the discovery of this planet could lead us on to a larger planet potentially ten times bigger that earth.



The Red line represents Pluto's orbit around the sun. The orange line represents the new dwarf plant ,2012 VP113.



Three different images taken two hours apart and overlaid to reveal 2012 VP113's movement (coloured dots)

By Joe

MANSTON MAYHEM



Manston airport, in Thanet, East-Kent, is putting 144 jobs at risk as it is potentially going to close. The company that owns the airport is running out of money. As of Friday, 21/03/2014, the Dutch airline "KLM" are no longer taking

bookings from Manston to Amsterdam.

Nicholas Reed, the chairman of a campaign promoting the use of Manston airport said "The news that Manston Airport may close is both horrifying and ridicu-

lous." There is a possible buyer called Ann Gloag who hopes to reopen the local airport . The current management is worried for the future of this airport.