

REFERENCE SECTION



Followed by the Family Support Pages

Picking up
and
dropping
off by car

School
Absence
Procedure

Details for
Sports
fixtures

PE
Piercings

Student
Safeguardi
ng after
3.20pm

Kent Music

Bicycle
Safety at
School

Family
Support
pages

Extra
Curricular
Clubs

Picking up and dropping off by car.

We have recently had a number of reports from local residents regarding unsafe and illegal parking in nearby streets. We appreciate that parking around the school is limited but parking in an unsafe way can endanger the lives of our students and other pedestrians. We are committed to safeguarding our students and ask that you take notice of the following:

- Please do not park in the school entrance or exit or on the hazard lines either side of the entrance and exit gates.
- Please park considerately when dropping off or picking up your child. Please do not park on our neighbours' driveways or over their drop curbs, even if this is only for a few minutes.
- Please do not attempt to access the school car park using the security gates unless you have a temporary car park access pass.
- Please try to drop off/pick up your child from one of the local quiet side streets.
- Unfortunately, we have had some reports from local residents of verbal abuse and aggressive behaviour from parents over parking issues.



School Absence Procedure

It is important to remind you that if your child is going to be absent from school, you must call the absence line, 01843 864941, option 1, or email: csayer@danecourt.kent.sch.uk as soon as possible or at the very latest by 10am. Sixth form absence should be emailed to sfabsence@danecourt.kent.sch.uk. Unless pre-arranged you are required to do this every day your child is absent. From a safeguarding perspective, your cooperation with this is essential and appreciated.

Details for Sports Fixtures

All sporting fixtures have a team sheet with details of the location of the fixture, arrive, leave and return timings and the team. These are all found on the fixture board in the PE building. We ask students to take a photo of this and to show home so parents/carers are aware. Please do be aware that on away fixtures the return time may vary due to situations outside of our control such as traffic. If a fixture is leaving before school hours please do not arrive any earlier than the time stated as there will be no one in school to let you in the gates until the time specified on the fixture sheet.

PE Piercings:

Please can you ensure if your child has a piercing that cannot be removed, they must come into PE with their own medical tape to cover them and a note from parent/carers advising the school as to when they can be removed. We recommend any new piercings wait until the beginning of the summer holidays please. Any injured students must have a note from parents/carers to email the school to inform so we are aware. If an injury requires more than one week of not participating in PE, we do need a note/evidence from a medical professional please. Students must still bring in and change into PE kit unless their injury makes it too painful or impossible to do.

Student Safeguarding after 3.20pm

A reminder to parents regarding the safeguarding of their children if staying in school after 3.20pm.

- Students must not be unaccompanied in school, except in the Heart area.
- Students must leave site by 4.20pm, unless in an extended lesson/club, attending a detention, or waiting for an event
- Staff accompany students to the exit when it is time to leave.

Many thanks for your support with this.

Kent Music

Kent Music provide financial assistance for instrumental lessons up to £115 a term (£345 a year) if your child receives free school meals. This pot of money is finite and when it is gone it will not be available again until September next year. If your child is interested I would encourage you to apply quickly at the link below!

<https://www.kent-music.com/financial-assistance/>

If you have any questions please do not hesitate to contact the Music department.



Bicycle Safety at School

Please be aware that the bicycle shed is NOT a safe place to leave a bike overnight. If students need to leave a bicycle overnight for whatever reason or even whilst at an after-school club, the bicycle needs to be put in the main bicycle shed when they first arrive at school to save wheeling it through the school. The bicycle cage at the front of the school is locked overnight, but please also ensure your child's bicycle has a lock, lights, and that they use a bicycle helmet. We would also like to raise awareness for students cycling in the winter months in the dark having good reflective gear and lights on their bicycles to ensure they can be seen clearly by other road users.



Family Support Pages

Parent Support Webinars

Our NHS Emotional Wellbeing Team continue to support parents with their virtual webinars based on challenging issues parents may face. If you would like to attend a session, please email holmes@danecourt.kent.sch.uk.

This and all other support available for parents is listed on our school website, within the Family Support page <https://danecourt.kent.sch.uk/parents8/news6/family-support>

Financial concerns

At Dane Court Grammar School, we are committed to ensuring that finances are not a barrier to accessing educational trips and essential equipment for lessons; therefore financial support may be available. If you have difficulty contributing to the cost of a trip or essential equipment, please contact the school office at admin@danecourt.kent.sch.uk or the Sixth Form office (abowen@danecourt.kent.sch.uk) to discuss anything.

PP funding for ingredients

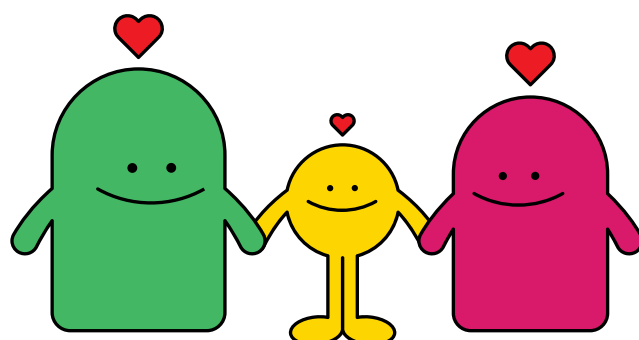
Did you know that if your child is eligible for PP funding, we are able to help to provide ingredients for them to cook with. Please get in touch with Mrs Edmondson or Mrs Leese to make arrangements for this to happen if you will find supplying ingredients difficult.
leese@danecourt.kent.sch.uk nedmondson@danecourt.kent.sch.uk

Hardship Help guide

Please find below a link to a 'Hardship Help' guide. This includes universal support available across England/Kent, as well as district-specific support.

2nd Hand Uniform Shop

The 2nd Hand Uniform Shop will be open from 3.15 to 4.15 the first Tuesday of each month. If you require any 2nd hand uniform but can't get into school please email any requirements to admin@danecourt.kent.school.uk and we will do our best to sort suitable items which can be picked up by the student from the main school office. If you have any spare coat hangers or school ties we would be very grateful of any donations. The School Wear Centre in Margate also sells 2nd hand uniform for a small charge to cover laundry costs.



Please check if your child is eligible for free school meals.

With the cost of living crisis creating increased challenges for our community, we ask all parents to check if their child is eligible to receive free school meals. Applying for free school meals if you are eligible will mean enhanced pupil premium funding for the school. This will not only allow us to pay for school trips, study materials and revision guides for your child, but will also allow increased funding for the quality of education at Dane Court as a whole. We would be very grateful for your help: please apply if you are eligible.

Who is eligible for free school meals?

Your child may be able to get free school meals if you get any of the following. For full information, visit <https://www.gov.uk/apply-free-school-meals>.

- Income Support
- income-based Jobseeker's Allowance
- income-related Employment and Support Allowance
- support under Part VI of the Immigration and Asylum Act 1999
- the guaranteed element of Pension Credit
- Child Tax Credit (provided you're not also entitled to Working Tax Credit and have an annual gross income of no more than £16,190)
- Working Tax Credit run-on - paid for 4 weeks after you stop qualifying for Working Tax Credit
- Universal Credit - if you apply on or after 1 April 2018 your household income must be less than £7,400 a year (after tax and not including any benefits you get)

I think my child is eligible for free school meals. What do I do now?

You should apply for free school meals via the Kent County Council website. Kent County Council will then inform the school to allow us to access the funding, so you don't have to do anything else.

The link is here: <https://www.kent.gov.uk/education-and-children/schools/free-school-meals>

What if I am worried that my child will be embarrassed at school?

Please do not worry. Our systems are extremely discreet, and our electronic payment system in the school canteen means that it is impossible to tell who is receiving a free school meal. Many students receive free school meals at our school.

Free School Meals - how they work

Please be aware that if your child receives free school meals, this is how the system works on a daily basis

- Your child will receive £1.10 for breakfast; which they must use before period 1 at 8.40am, if the £1.10 is not used by 8.40am then it is withdrawn from the account. For students to take advantage of the breakfast free school meal they must be in school in time to use it before period 1.
- They will then receive £2.41 for lunch, which they can use from breaktime at 10.45am onwards until the end of lunch at 2.20pm. The best value meal available is the lunch time main meal which comes with and main course and pudding bought simultaneously. Any unspent funds are not carried over from day to day, and a new amount is added each day. You can add cash to your child's account using Wisepay if you wish, for extra snacks. But please note that the money given for free school meals should be spent where possible on food and not drinks to get the best value for money.

£2.41 MEAL DEAL

MENU

Hot Options:

Any Main Meal & Dessert

Includes 1 of the following:

Main Meal of the day.

Freshly Filled Baked Jacket Potato.

Hot Pasta Pot of the day.

Also includes 1 of the following:

Daily Dessert, Whole Piece of Fruit or Cookie.

Salad Options:

Option 1

Self Service Salad Bar including a Protein Pot.

Piece of Whole Fruit, Homemade Cookie or Daily Dessert.

Option 2

16oz cold Pasta Pot.

Piece of Whole Fruit, Homemade Cookie or Daily Dessert.

Sandwich Options:

Choice of Sandwich or Baguette,

filling choice

Cheese, Ham, Tuna, Egg or Chicken

Piece of whole Fruit, Homemade Cookie or daily Dessert of the Day.

Extra-Curricular Music Clubs for Term 1

Junior Choir

Y7 and 8 - everyone welcome!

EVERY MONDAY

1:40-2:15 PM IN H7

COME AND COLLECT A LUNCH PASS AT BREAK SO YOU CAN SKIP THE QUEUE!



Orchestra

Grade 1+ players welcome!

EVERY TUESDAY

1:40-2:15 PM IN H7

COME AND COLLECT A LUNCH PASS AT BREAK SO YOU CAN SKIP THE QUEUE!



String group

All Grade 3+ String players welcome!

EVERY WEDNESDAY

3:30-4:30 PM IN H7



Senior Choir

Y9-13 - everyone welcome!

EVERY WEDNESDAY

1:40-2:15 PM IN H7

COME AND COLLECT A LUNCH PASS AT BREAK SO YOU CAN SKIP THE QUEUE!



Ukulele group

Everyone welcome!

EVERY THURSDAY

1:40-2:15 PM IN H8

COME AND COLLECT A LUNCH PASS AT BREAK SO YOU CAN SKIP THE QUEUE!



Jazz Band

Grade 3+ players welcome!



EVERY THURSDAY

1:40-2:15 PM IN H7

COME AND COLLECT A LUNCH PASS AT BREAK SO YOU CAN SKIP THE QUEUE!

Brass band

All Brass players welcome!

EVERY FRIDAY

1:40-2:15 PM IN H7

COME AND COLLECT A LUNCH PASS AT BREAK SO YOU CAN SKIP THE QUEUE!



Woodwind group

All Woodwind players welcome!

EVERY FRIDAY

1:40-2:15 PM IN H8

COME AND COLLECT A LUNCH PASS AT BREAK SO YOU CAN SKIP THE QUEUE!

